

GOSHEN TWP 00130 Hardin County, Ohio Michael T. Bacon, Auditor 14-220018.0000 RES 2025 KENTON SD C66

sale

Eff Rate:- 51.44 44.77 47.15 46.85 a/r

Table with columns: Year, Description, Date, Price, etc. Includes rows for 2022-2025 BEIDELSCHIES WADE O and KENTON OH 43326.

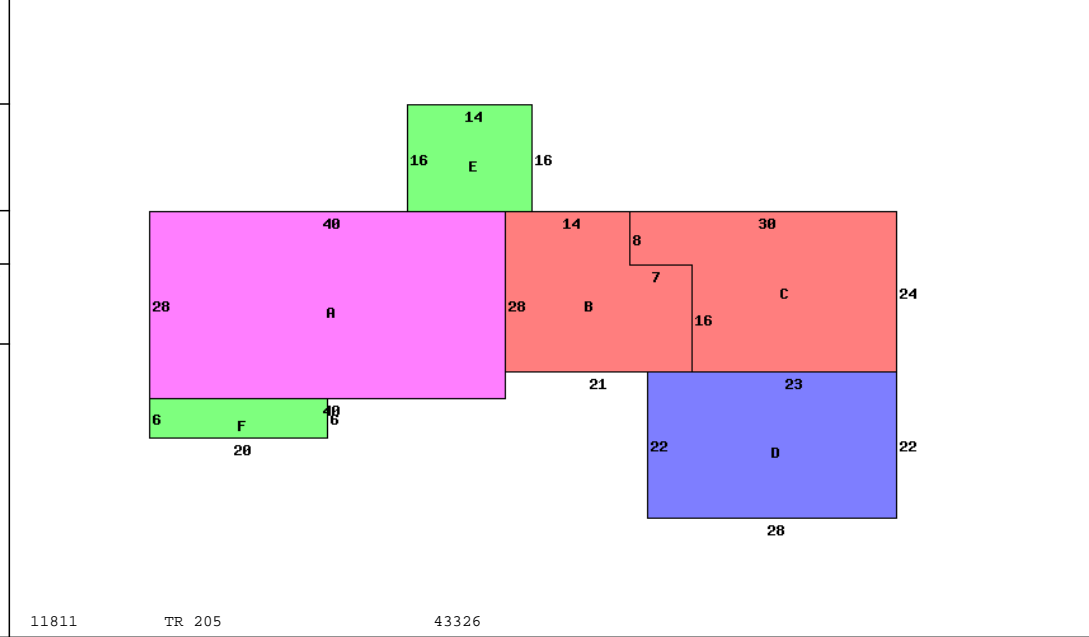
Table with columns: Tax Year, Prop Cls, Acres, Land100%, Bldg100%, Totl100%, Cauvl00%, Tax Value, Land 35%, Bldg 35%, Totl 35%, Hmstd35%, Owner Oc, Hmstd RB, Net Tax, Sp-Asmnt.

Table with columns: SHB+, CONS, TYPE, FACT, SQ-FT, VALUE, a, \*MAIN, b, ADDTN, c, ADDTN, d, GRAGE, e, PORCH, f, PORCH.

Table with columns: Sale#, #p, sale date, To, Type/Invalid?, Sales\$, co:land, co:blgd.

Table with columns: Year, Land, Bldg, Total, Net Tax.

Table with columns: project, ben acres, / % factor.



11811 TR 205 43326

Table with columns: Occupancy, \*DWELLING COMPUTATIONS, Sq-Ft, Value. Includes rows for Story Height, Floor Level, Shingle, Plaster/Drywall, etc.

Table with columns: Bldg Type, SHB+Cons, DixHt, Area, Unit, Grade, Blt/Renov, Replace, Phy, Fnc, True, Value. Includes rows for Bldg Type, effective frontage, depth, actual rate, etc.

Call Back: Sign: PSN Date: 2015-05-11 Lister: 14-220018.0000-v082020R