

GOSHEN TWP 00130 Hardin County, Ohio Michael T. Bacon, Auditor 14-220018.0000 RES 2025 KENTON SD C66

sale

Table with columns: Year, Description, Date, Price, and other details for property sales.

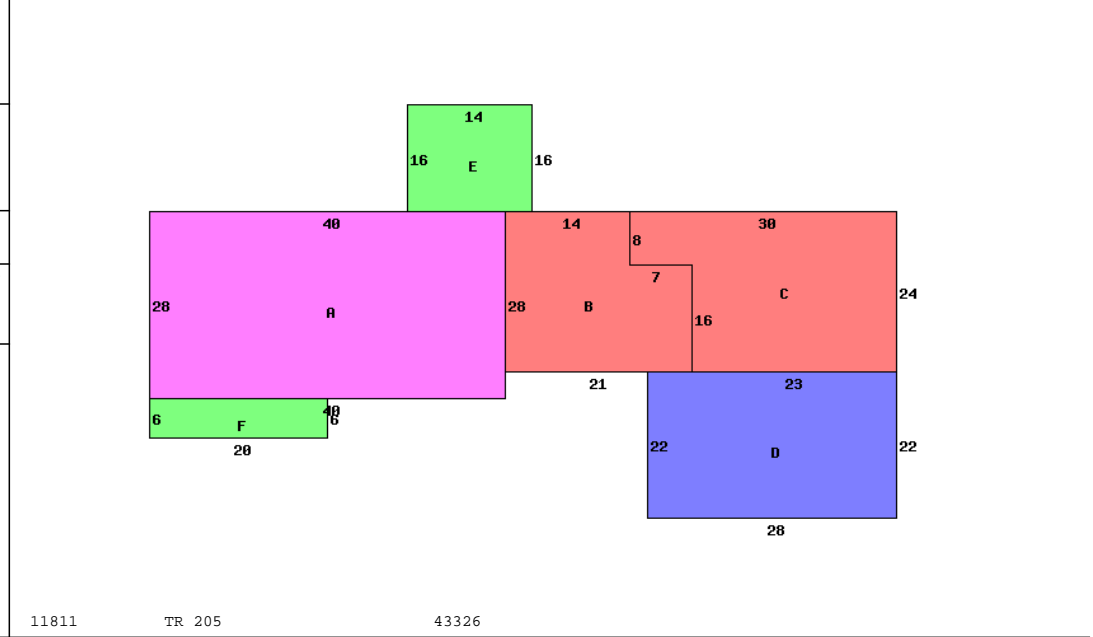
Table with columns: Eff Rate, Tax Year, Prop Cls, Acres, Land100%, Bldg100%, Totl100%, Cauvl00%, Tax Value, and Net Tax.

Table with columns: SHB+, CONS, TYPE, FACT, SQ-FT, VALUE, and other property details.

Table with columns: Sale#, #p, sale date, To, Type/Invalid?, Sales\$, co:land, co:blgd.

Table with columns: Year, Land, Bldg, Total, Net Tax.

Table with columns: project, ben acres, and % factor.



11811 TR 205 43326

Table with columns: Occupancy, *DWELLING COMPUTATIONS, Bldg Type, SHB+Cons, DixHt, Area, Unit, Grade, Blt/Renov, Replace, Phy Fnc, True Value.

Table with columns: Bldg Type, SHB+Cons, DixHt, Area, Unit, Grade, Blt/Renov, Replace, Phy Fnc, True Value, and other details.