

GOSHEN TWP 00130 Hardin County, Ohio Michael T. Bacon, Auditor 14-190011.0000 E17 AGR 2025 KENTON SD

sale

Eff Rate:- 51.44 44.77 47.15 46.85 a/r

Table with columns for year, date, and property description. Includes entries for SHICK FARMS FAMILY LI and KENTON OH 43326.

Table with columns for Tax Year (2022-2025), Prop Cls, Acres, Land100%, Bldg100%, Totl100%, Cauv100%, Tax Value, and various percentages. Includes a 'hmstd' entry.

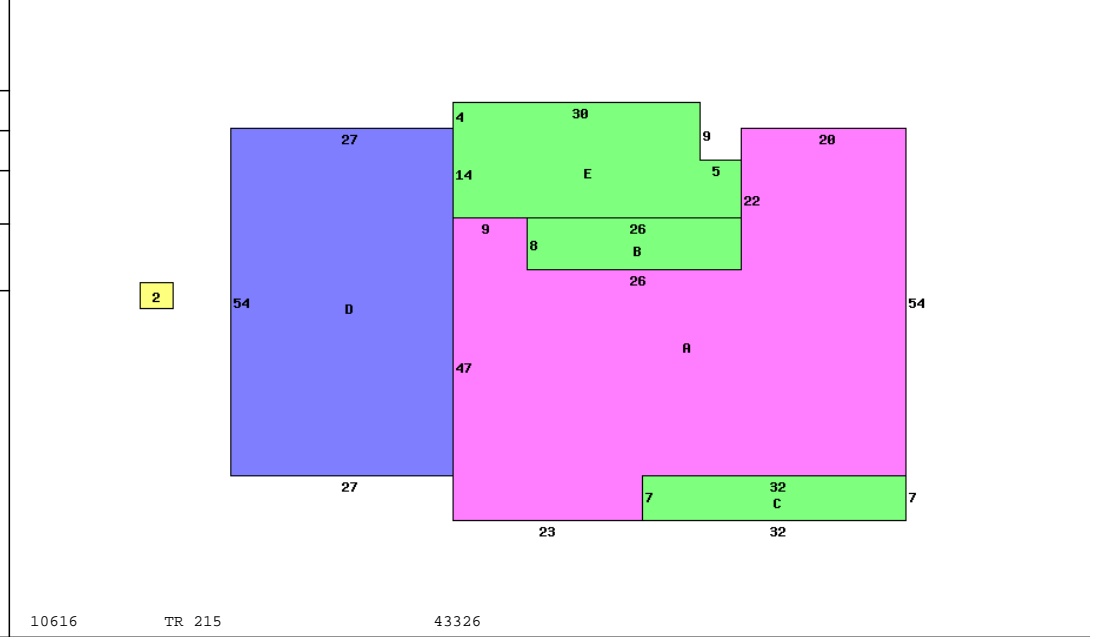
Table with columns for SHB+, l B, CONS, TYPE, FACT, SQ-FT, VALUE, and a *MAIN. Lists various property features and their values.

#: 12, L/W 141900120000 55.997a

Table with columns for Sale#, #p, sale date, To, Type/Invalid?, Sale\$, co:land, co:bldg. Shows sale details for SHICK FARMS FAMILY LIMIT.

Table with columns for Year, Land, Bldg, Total, Net Tax. Shows tax data for years 2021 and 2020.

Table with columns for Project, address, and factor. Lists projects like HARDIN COUNTY LANDFILL and SANDERS DITCH.



10616 TR 215 43326

Table with columns for Occupancy, Story Height, Floor Level, Shingle, and Dwelling Computations (Sq-Ft, Value). Includes details for a single family dwelling.

Table with columns for Bldg Type, SHB+Cons, DixHt, Area, Unit Rate, Grade, Blt/Renov, Replace, Phy Dpr, Fnc Dpr, True Value. Includes a table for SOIL and a summary of market values.