

GOSHEN TWP 00130 Hardin County, Ohio Michael T. Bacon, Auditor 14-170023.0000 RES 2025 KENTON SD G07.01

sale

Table with columns for year (2022-2025), name (HEILMAN J DOUGLAS), address (10134 TR 265), and value (\$0).

Orig Tax Year 2021 Parent: 14-170004.0000

Table with columns for Eff Rate (51.44, 44.77, 47.15, 46.85), a/r, Tax Year (2022-2025), and various tax values (Land 35%, Bldg 35%, etc.).

Table with columns for SHB+ (2 B), CONS (B2, B/C, F/C, OFF), TYPE (M, G, A, P), FACT (1196, 1081, 852, 576, 384), SQ-FT (30270, 11520), VALUE (30270, 11520), and other details.

Table with columns for Sale# (34), #p (2), sale date (2020-01-30), To (HEILMAN J DOUGLAS), Type/Invalid?, Sales\$, co:land, co:blgd.

Table with columns for Year (2021, 2020), Land, Bldg, Total, Net Tax.

Table with columns for project (500 HARDIN COUNTY LANDFILL), ben acres, and % factor.

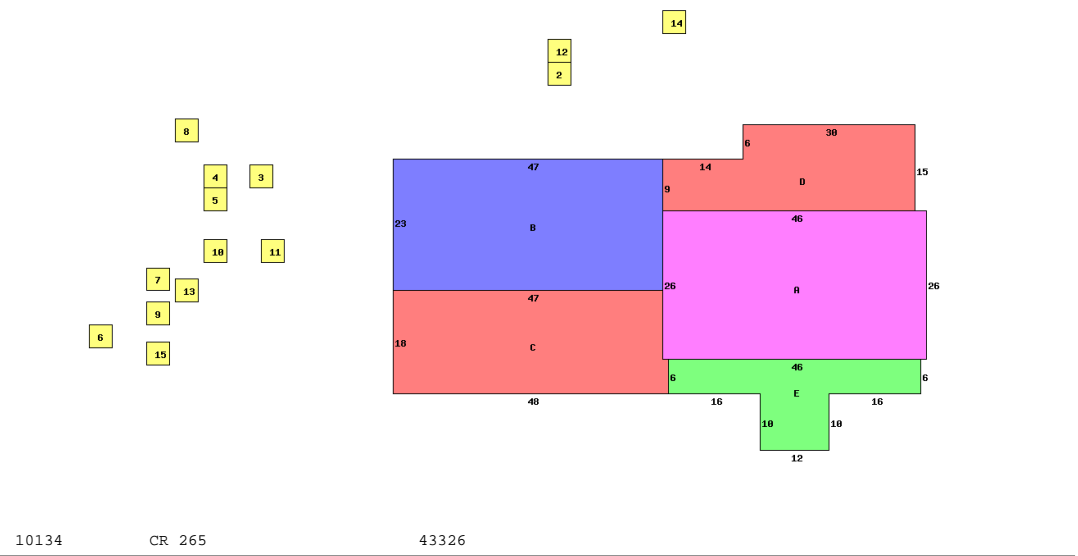


Table with columns for Occupancy (Single Family), *DWELLING COMPUTATIONS (Sq-Ft, Value), and various building details like Story Height, Floor Level, Metal, etc.

Table with columns for Bldg Type, SHB+Cons, DixHt, Area, Unit Rate, Grade, Blt/Renov, Replace, Phy, Fnc, True Value.

Table with columns for acres/ frontage, effective depth, depth factor, actual rate, effective rate, extended value, true value.