

GOSHEN TWP KENTON SD 00130 Hardin County, Ohio Michael T. Bacon, Auditor 14-140014.0000 RES 2025

sale

Eff Rate:- 51.44 44.77 47.15 46.85 a/r

Table with columns: Year, Description, Date, Value. Includes entries for 2022-2025 LEGROS KIM E, MILLER KYLE C, and KENTON OH 43326.

Table with columns: Tax Year, Prop Cls, Acres, Land100%, Bldg100%, Totl100%, Cauv100%, Tax Value, Land 35%, Bldg 35%, Totl 35%, Hmstd35%, Owner Oc, Hmstd RB, Net Tax, Sp-Asmnt.

Table with columns: SHB+, LHB, 1, CONS, TYPE, FACT, SQ-FT, VALUE, a, \*MAIN, ADDTN, GRAGE, PORCH, PORCH.

gas fireplace

Table with columns: Sale#, #p, sale date, To, Type/Invalid?, Sales\$, co:land, co:blgd. Includes historical sales data from 190 to 911.

Table with columns: Year, Land, Bldg, Total, Net Tax. Shows tax data for years 2021 and 2020.

project 500 HARDIN COUNTY LANDFILL XA/2025 ben acres / % factor

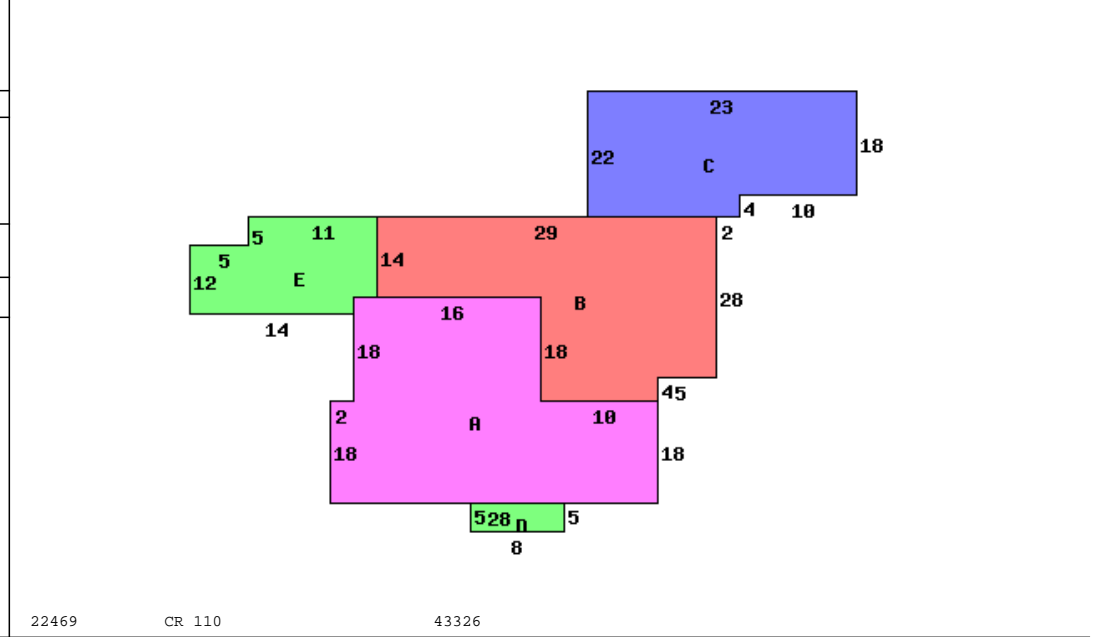


Table with columns: Occupancy, \*DWELLING COMPUTATIONS, Sq-Ft, Value. Includes details for 1 Single Family dwelling, including floor level, composition, and features like garages and carports.

Table with columns: Bldg Type, SHB+Cons, DixHt, Area, Unit, Grade, Blt/Renov, Replace, Phy, Fnc, True. Includes details for 1 DWELLING, such as frontage, depth, and various rates.

homesite .9850 effective frontage depth factor actual rate effective rate extended value true value 15000 15000 15000 15000