

GOSHEN TWP 00130 Hardin County, Ohio Michael T. Bacon, Auditor 14-090026.0000 RES 2025 KENTON SD B68

sale

Table with columns for year, name, date, and address. Includes entries for 2022 EMANS LYNDA L & FLOYD, 2023 MEEKS APRIL & SHAWN E, 2024 MEEKS APRIL & SHAWN E, and 2025 MEEKS APRIL & SHAWN EMA.

Table with columns for Eff Rate, Tax Year, Prop Cls, Acres, Land100%, Bldg100%, Totl100%, Cauv100%, Tax Value, and various percentages. Includes values for 51.44, 44.77, 47.15, 46.85, and a/r.

Table with columns for SHB+, CONS, TYPE, FACT, SQ-FT, VALUE, and a *MAIN. Includes values for 1 B, F, DK, F, OPF, PAT.

Table with columns for Sale#, #p, sale date, To, Type/Invalid?, Sale\$, co:land, co:bldg. Includes values for 233, 284, 53.

Table with columns for Year, Land, Bldg, Total, Net Tax. Includes values for 2021, 2020.

Project 500 HARDIN COUNTY LANDFILL XA/2025 ben acres / % factor

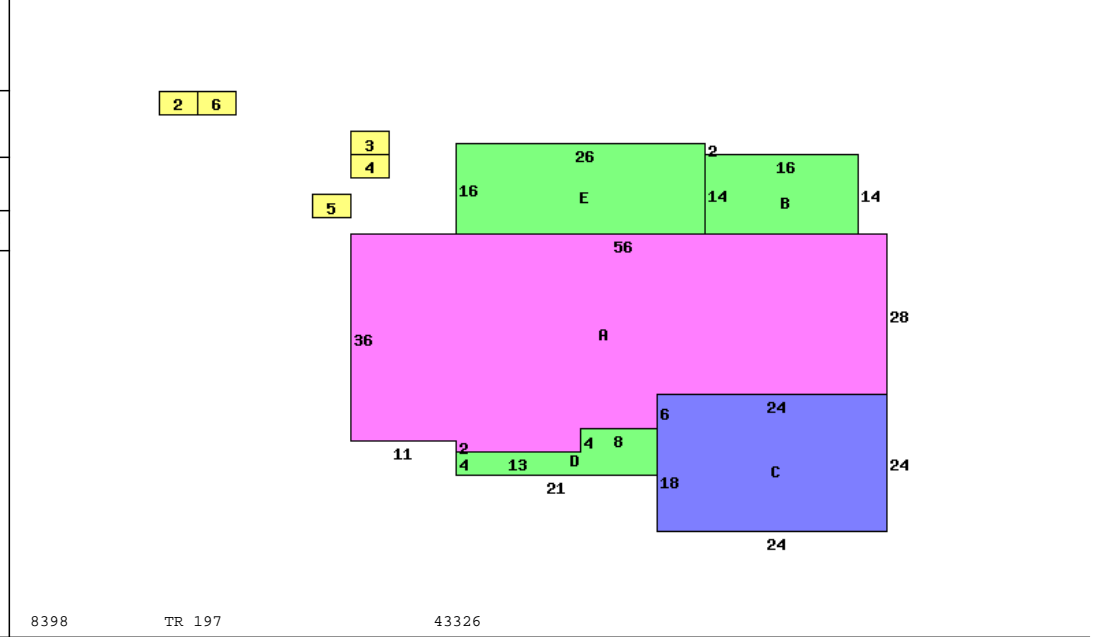


Table with columns for Occupancy, Dwelling Computations (Sq-Ft, Value), and various building details like Story Height, Floor Level, Metal, Roof, etc.

Table with columns for Bldg Type, SHB+Cons, DixHt, Area, Unit Rate, Grade, Blt/Renov, Replace, Phy Fnc, True Value. Includes values for 1 DWELLING, 2 Pole Build, 3 Shed, 4 P, 5 Shed, 6 Lean-To.

Table with columns for homesite, small acreage, acres/ frontage, effective frontage, depth, depth factor, actual rate, effective rate, extended value, true value. Includes values for 1.0000, 2.0000, 15000, 5000, 15000, 10000, 15000, 10000.