

GOSHEN TWP KENTON SD 00130 Hardin County, Ohio Michael T. Bacon, Auditor 14-070004.0000 D61 AGR 2025

sale

Eff Rate:- 51.44 44.77 47.15 46.85 a/r

Table with columns for year (2022-2025), description (POLAND ENTERPRISES IN/INC), date (1987-06-29), and value (\$0).

Table with columns for Tax Year (2022-2025), Prop Cls, Acres, Land/Bldg/Totl 100%, and Tax Value (Land 35%, Bldg 35%, Totl 35%, Hmstd 35%).

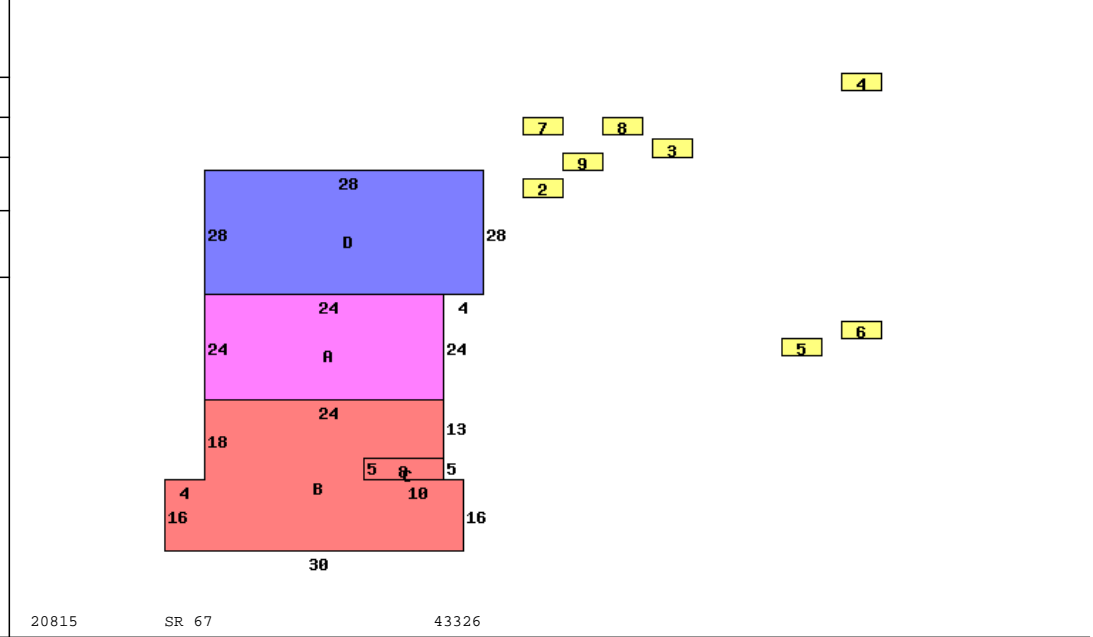
Table with columns for SHB+ (1, 1HB, 1), CON (F/C, F, F/C, F2), TYPE (M, A, A, G), FACT (576, 872, 40, 784), SQ-FT (576, 872, 40, 784), VALUE (18820), and other codes (a, b, c, d).

#: 5, L/W 140700050000 33.00a

Table with columns for Sale# (526), #p (0), sale date (1987-06-29), To, Type/Invalid?, Sale\$, co:land (0), co:blgd (222510).

Table with columns for Year (2021, 2020), Land (42970), Bldg (40220), Total (83190), Net Tax (3963.94, 3452.32).

Table with columns for project (500, 387, 362), description (HARDIN COUNTY LANDFILL, SANDERS DITCH, SANDERS DITCH-TYMOCHTEE), and other codes (XA/2025, XA/2024).



20815 SR 67 43326

Table with columns for occupancy (1 Single Family), \*DWELLING COMPUTATIONS (Sq-Ft, Value), Story Height (1H), Floor Level, Main (FRAME), Part Upper (FRAME), Basement, Subtotal, Shingle (Roof, GABLE), Plaster/Drywall (D P P), Panelled Wall (X), Floor/Carpet (X X), Floor/Concrete (X), Floor/Tile-Lino (X), Number of Rooms (1 6 3), Bedrooms (3), Central Heat (A), FORCED AIR, Plumbing (Standard, 1).

Table with columns for Bldg Type (1 DWELLING, 2 Grain Bin, 3 Pole Build, 4 Pole Build, 5 Quonset, 6 Shed, 7 Grain Bin, 8 Grain Bin, 9 Grain Bin), SHB+Cons (1 F/C, \*PP 0), DixHt (FtxFt), Area, Unit Rate, Grade, Blt/Renov Cond, Replace Value, Phy Dpr, Fnc Dpr, True Value.

Table with columns for Tab # (C 1, C 39, W 1, W 39), S O I L (BOA BLOUNT SILT LOAM 0-, PM PEWAMO SILTY CLAY L, BOA BLOUNT SILT LOAM 0-, PM PEWAMO SILTY CLAY L), Acres, Mkt/Ac, Market, Au/Ac, Cauv.

71 428640 (100%) 220380 CAUV # 522 150020 (35%) 77130