

DUDLEY TWP ELGIN SD 00120 Hardin County, Ohio Michael T. Bacon, Auditor 13-060032.0000 RES 2025

sale Eff Rate:- 50.06 — 47.81 — 50.17 — 43.00 — a/r

Table with columns: Year, Description, Date, Value, etc. Includes entries for 2022-2025 Miller Harvey H & ELL and MT Victory OH 43340.

Table with columns: Tax Year, Prop Cls, Acres, Land100%, Bldg100%, Totl100%, Cauv100%, Tax Value, etc. Includes rows for Land 35%, Bldg 35%, Totl 35%, Hmstd35%, Owner Oc, Hmstd RB, Net Tax, and Sp-Asmnt.

Table with columns: SHB+, CONS, TYPE, FACT, SQ-FT, VALUE, a, b, c, d, e, f, g, h. Includes rows for 2 B 04 and 1 B 04.

Table with columns: Sale#, #p, sale date, To, Type/Invalid?, Sales\$, co:land, co:blgd. Includes rows for 111 1 and 664 2.

Table with columns: Year, Land, Bldg, Total, Net Tax. Includes rows for 2021 and 2020.

Table with columns: project, ben acres, /, %, factor. Includes rows for 146 JONES - SCIOTO RIVER and 500 HARDIN COUNTY LANDFILL.

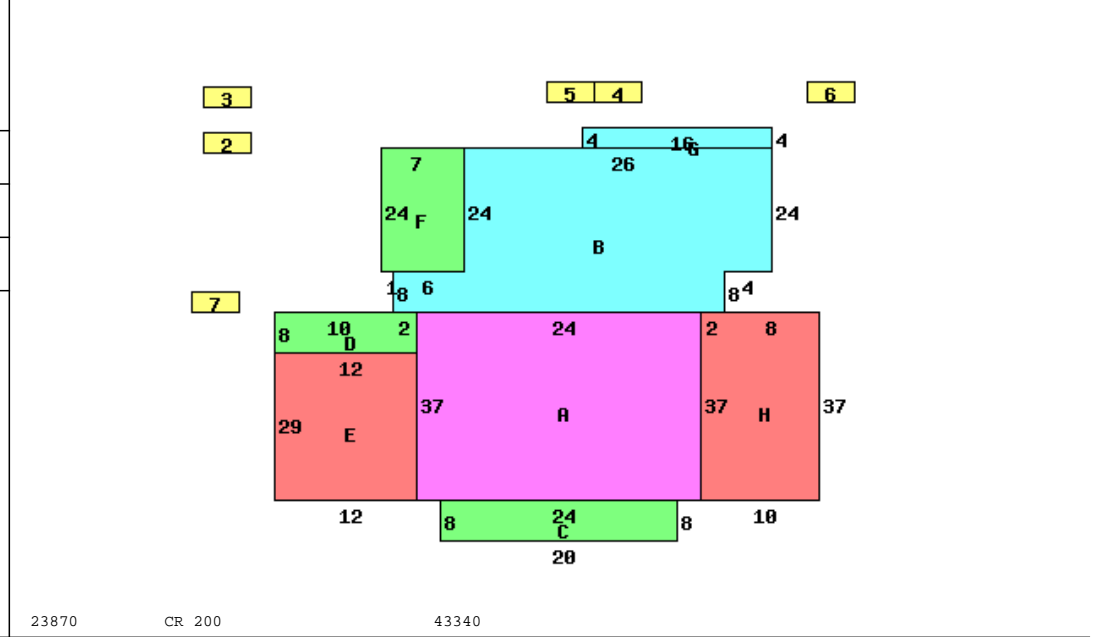


Table with columns: Occupancy, \*DWELLING COMPUTATIONS, Sq-Ft, Value. Includes rows for Story Height, Floor Level, Metal, and Plaster/Drywall.

Table with columns: Bldg Type, SHB+Cons, DixHt, Area, Unit, Rate, Grade, Blt/Renov, Replace, Phy, Fnc, True Value. Includes rows for Dwelling, Flat Barn, Pole Build, Poultry Ho, and Shed.

Call Back: Sign: PSN Date: 2015-02-09 Lister: 13-060032.0000-v082020R