

CESSNA TWP Hardin County, Ohio 07-250043.0000 RES
KENTON SD 00070 Michael T. Bacon, Auditor J10.01 2025

Table with columns for sale date, property address (WELLS RAYMOND E & REB), and tax information (Orig Tax Year, Parent).

Table with columns for Eff Rate, Tax Year, Prop Cls, Acres, Land100%, Bldg100%, Totl100%, and Cauv100%.

Table with columns for SHB+ (1 B), CONS (F), TYPE (M, G, P), FACT (1568, 864, 96, 120, 290), SQ-FT, VALUE, and Type/Invalid? (a, b, c, d, e).

Table with columns for Sale#, #p, sale date, To, Type/Invalid?, Sale\$, co:land, and co:blgd.

Table with columns for Year, Land, Bldg, Total, and Net Tax for years 2021 and 2020.

Table with columns for project address (902 MAIN DISTRICT CONSERVANCY, 500 HARDIN COUNTY LANDFILL) and XA/2025.

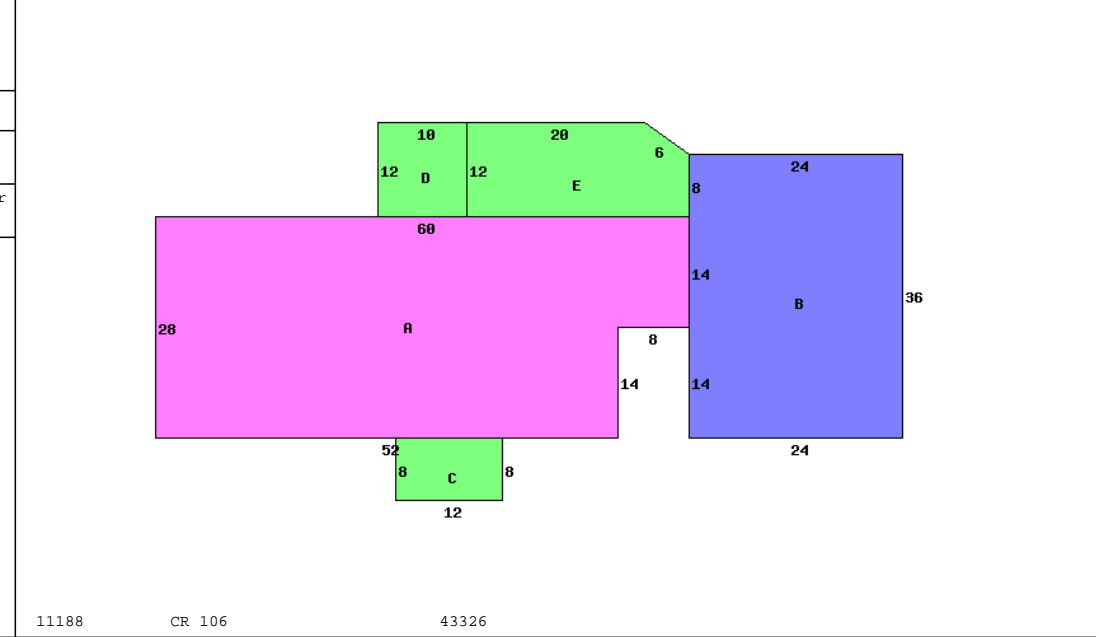


Table with columns for Occupancy (Single Family), *DWELLING COMPUTATIONS (Sq-Ft, Value), and various building details like Story Height, Floor Level, Metal, and Plumbing.

Table with columns for Bldg Type, SHB+Cons, DixHt, Area, Unit, Grade, Blt/Renov, Replace, Phy Fnc, and True Value.

Table with columns for homesite, small acreage, effective frontage, depth, actual rate, effective rate, extended value, and true value.