

CESSNA TWP Hardin County, Ohio 07-250037.0000 RES
KENTON SD Michael T. Bacon, Auditor J90.01 2025

00070

sale

Eff Rate:- 49.57 43.43 45.81 45.51 a/r

Table with columns for year, address, and value. Includes entries for 2022, 2023, 2024, and 2025 with various property details and a total value of \$40,000.

Table with columns for Tax Year (2022-2025), Prop Cls, Acres, Land100%, Bldg100%, Totl100%, and Cauv100%. Includes tax values and net tax amounts.

Orig Tax Year 1999
Parent: 07-250004.0000

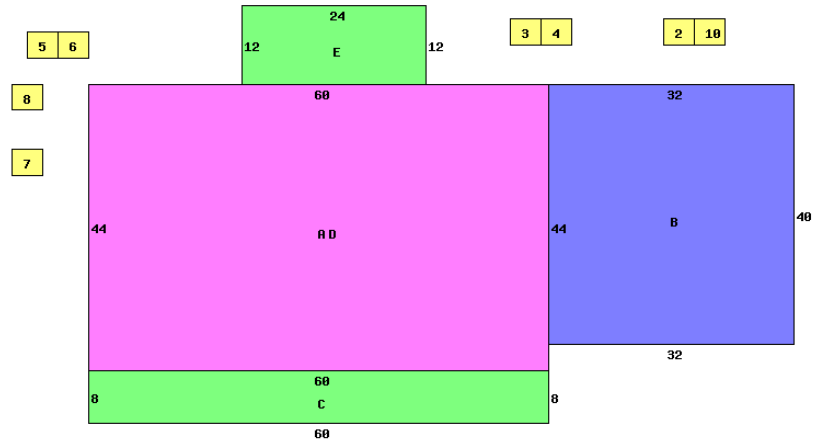
Table with columns for Tax Value (Land 35%, Bldg 35%, Totl 35%, Hmstd35%, Owner Oc, Hmstd RB, Net Tax, Sp-Asmnt) and corresponding values for years 2022-2025.

Table with columns for SHB+, CONS, TYPE, FACT, SQ-FT, VALUE, and other identifiers. Lists various property features and their values.

Table with columns for Sale#, #p, sale date, To, Type/Invalid?, Sale\$, co:land, co:blgd. Shows sale history for 2021 and 2022.

Table with columns for Year, Land, Bldg, Total, Net Tax. Shows annual tax data for 2021 and 2022.

Table with columns for project name, address, and factor. Lists various projects and their associated factors.



10035 CR 135 43326

Table with columns for occupancy, story height, floor level, shingle, and other details. Includes a section for 'DWELLING COMPUTATIONS' with Sq-Ft and Value columns.

Table with columns for Bldg Type, SHB+Cons, DixHt, Area, Unit Rate, Grade, Blt/Renov, Replace, Phy, Fnc, True Value. Includes a section for 'homesite other' with acres/ frontage, effective frontage, depth, actual rate, effective rate, extended value, and true value.